

2019



TT



TT
Coupe/Roadster

TTS
Coupe

An icon derived from technology and tradition.

Take a moment and really look at the images on this page. An iconic design represented in three sculpted expressions of progressive Audi technology and tradition. The 2019 Audi TT is available as a Coupe or Roadster. The Audi TTS features sport-tuned performance and appeal. The available competition packages for TT and TTS reflect the legacy of Audi Sport® with their fixed rear-wing spoiler, Black optic exterior elements and red brake calipers. With a design inspired by a runner on the starting blocks, the TT family of vehicles brings the thrill of sport to the roads you take every day.



2019 Audi TTS Coupe shown in Mythos Black metallic with available 20" Wheel package and Red brake calipers.



2019 Audi TT Coupe shown in Nano Gray metallic with available S line® competition package.



2019 Audi TT Roadster shown in Glacier White metallic with available S Sport seat package and 19" Wheel package.

We went the distance so you could enjoy every mile.



Audi engineers put countless hours of research and development toward producing a sports car worthy of your satisfaction, even if it meant working overtime to ensure the performance is precisely what it needs to be. A potent 228-hp turbocharged 2.0-liter TFSI[®] engine¹ and the vertical elements of the full LED headlights pay homage to the Audi R8. We designed an ergonomic interior to help provide an optimal driving position with easy access to advanced features, like MMI[®] touch and Audi virtual cockpit.² And we painstakingly created a Roadster worthy of the TT badge, ready to wind down the blacktop with the top down.

2019 Audi TT Coupe shown in Nano Gray metallic with available S line[®] competition package.



2019 Audi TT Roadster shown in Glacier White metallic with available S Sport seat package and 19" Wheel package.



2019 Audi TT Roadster shown with Palomino Brown Fine Nappa leather seats, available S Sport seat package and Technology package.

Professional driver on a closed course. Do not attempt. 1 Always obey all speed and traffic laws. 2 Always pay careful attention to the road, and do not drive while distracted. See Owner's Manual for further details and important limitations.



Performance makes itself available at the most opportune times.

Whether it's off-the-line motivation, around-the-corner agility or the power to pass, the Audi TT Coupe and Audi TT Roadster were engineered to turn driver input into quick results. Powered by a 2.0-liter TFSI® four-cylinder engine that produces a broad range of turbocharged torque, the Audi TT feels eager to please. A seven-speed S tronic® dual-clutch automatic transmission and quattro® all-wheel drive turns engine power into exhilarating motion. Ride, handling and steering weight are driver adjustable through the innovative Audi drive select system that features comfort, dynamic and a customizable individual mode. By fusing these systems into a synergistic whole, the Audi TT rarely lets an opportunity to thrill pass you by.

	Drivetrain	Output	Performance ¹
TT Coupe	2.0-liter TFSI® four-cylinder engine with seven-speed S tronic® dual-clutch automatic transmission and quattro® all-wheel drive.	228 hp / 258 lb-ft.	TT Coupe
TT Roadster			0-60 mph in 5.2 seconds
			TT Roadster
			0-60 mph in 5.5 seconds
			Top speed 130 mph

TTS!



Turn the open
road into a
captive audience.

The captivating feeling of excitement, joy and thrills represents proof that we are alive. The Audi TTS rewards this enthusiastic spirit with its 288-hp, 2.0-liter turbocharged TFSI® engine¹ and S model exterior with Aluminum-optic styling notes. Little surprises along the road become moments to appreciate, like the grip of quattro® all-wheel drive. Quad exhaust outlets and optional Red brake calipers help turn those looking on into onlookers and help you make the most of your captive audience.

2019 Audi TTS shown in Turbo Blue with available 20" Wheel package and optional equipment.



2019 Audi TTS shown with available Rotor Gray Fine Nappa leather seats and Technology package.

Professional driver on a closed course. Do not attempt. ¹ Always obey all speed and traffic laws.

Your rivals won't deny your competitive instincts.



The available competition packages accentuate the powerful look of the 2019 Audi TT and TTS with details inspired by Audi Sport® models. High-gloss black exterior accents and S Sport seats wrapped with leather/Alcantara® seating surfaces mark a distinctive sporty appearance. Audi Sport® wheels, a fixed rear-wing spoiler and Red brake calipers help strike an aggressive, sport-forward stance.

2019 Audi TT Roadster shown in Nano Gray metallic with available S line® competition package (left).
2019 Audi TTS shown in Mythos Black metallic with available Competition package (right).



2019 Audi TTS shown with available Competition package.



A



B



D



E



F



G



H



I

1. Image shown for illustration purposes only; actual feature may vary. 2. Always pay careful attention to the road, and do not drive while distracted. See Owner's Manual for further details and important limitations. 3. Always obey all speed and traffic laws. 4. Not available on TT and TTS models equipped with a rear wing spoiler.

- A. Retractable acoustic soft top** | Quickly enjoy either sunshine or shade at the push of a button (Audi TT Roadster).
- B. Available Fine Nappa leather S Sport seats with neck-level heating system** | Helping you stay comfortable in changing climate conditions with the top down in the Audi TT Roadster.
- C. Standard Audi virtual cockpit** | Digital intelligence is right in your sight line¹
- D. Intuitive climate control system design** | Minimalist air vents with integrated controls help create a functional, clutter-free space.
- E. Interior leather treatment** | Finely crafted leather surfaces greet you from nearly every angle.
- F. Exterior LED lighting technology**
- G. MMI® touch** | Designed by our engineers to be a natural extension of your hand²
- H. Available Bang & Olufsen® Sound System** | Provides an elevated entertainment experience.
- I. Adaptive rear spoiler** | It automatically deploys at 75 mph³ and retracts when not needed⁴



See how the Audi TT has raised the standards of styling and performance.

AudiUSA.com

Let your self-expression shine.

Help fulfill all aspects of your lifestyle with Audi Genuine Accessories. Whether you're planning a getaway or looking to make a stylish personal statement, we have the essentials to equip your vehicle while conveying your individuality.



A. Audi Beam¹

This lens replaces the original entry light under your vehicle's door. When the door is open, the lens projects the four rings logo on the ground. Also available with the quattro® logo.

B. Compact cargo carrier²

Extra gear won't take up valuable cargo space with our aerodynamic carrier that offers a generous 10.5-cu-ft capacity. Black shown. Also available in Silver. Size: 76.8" long, 26.4" wide, 15.7" high. (Coupe only)

C. All-weather cargo mat³

Custom fit for your TT, the raised outside edge of the cargo mat helps contain spills and protect cargo-area carpeting from stains. The textured material helps control load shifting. (Coupe only)

D. 20" 5-spoke rima design wheel¹

Enhance the sport appearance of your Audi TT with unique cast-aluminum wheels.

E. All-weather floor mats³

The all-weather floor mats feature a deep-ribbed, channeled design that helps protect your vehicle's floor and carpeting from the elements. Black mats are available in a set of two and feature the TT logo.

F. Premium textile floor mats³

These skid-resistant, precision-fit mats are made of long-life fabric to help protect your vehicle's interior from the elements. Mats are black with silver piping and available in a set of two.

Audi Genuine Sport and Design Accessories

For a bolder appearance or a finishing touch, we have a solution that helps make every mile more enjoyable—and more yours.

- ▶ Stylish wheel designs
- ▶ License plate frames

Audi TravelSpace Transport Accessories

When you're on the go, help make sure what you want to carry fits with a variety of intelligent and innovative solutions.

- ▶ Bike and ski racks²
- ▶ Rooftop cargo carriers²
- ▶ In-vehicle cargo bags⁴

Audi Guard Comfort and Protection Accessories

Help protect what you love. Use Audi Guard Comfort and Protection Accessories to help keep your Audi looking like new—inside and out.

- ▶ Floor mats³
- ▶ First aid kit
- ▶ Cargo mats³

Audi Guard Car Care Products

Your Audi TT deserves the very best, and this is it: the only car care line designed specifically for Audi vehicles.

- ▶ Leather care⁵
- ▶ Detailing tools⁵
- ▶ Winter protection⁵

¹ Proper installation required. Professional installation recommended. See your authorized Audi dealer for details. ² Proper installation required. See dealer for details. All roof-rack system attachments require the base carrier bars. All accessories sold separately. Recreational equipment and sporting equipment not included. ³ Proper installation required. Professional installation may be recommended. See owner's literature and dealer for details. ⁴ Always ensure cargo is properly secured. See owner's manual for details. ⁵ Not available in all states. Check with your authorized Audi dealer for product availability.

Visit audi.us/accessories for more.

Rewrite the rules of style.



A. Braun lambskin leather jacket

Slip into this sporty-looking, soft leather jacket when the days are chilly. A banded collar and leather shoulder patches add distinctive touches, and zippered pockets help hold onto small items.

B. Under Armour® SideLine cap

The high-quality structured construction helps this cap keep its shape, while the stretch material provides a comfortable fit. To help wick away sweat, this cap features a HeatGear® sweatband. The Audi rings logo shows you're driven by great design.

C. Asobu® Le Canal bottle

Made from stainless steel and a vacuum-insulated dual copper interior, this bottle was designed to keep your beverages either cool or warm. The rubberized exterior makes it easy to grip, and its slender form slides easily into your backpack's bottle pouch.



D. Audi active wear

For you, the fun begins when you break a sweat. The Audi collection of active wear is designed to keep you warm when it's chilly, dry when it rains, or help shade your eyes on sunny days. Available in several styles and colors, these active life items are made to put in the extra miles.

E. Ladies' Saturday sweatshirt

The soft fleece texture is made from an 80% cotton and 20% polyester blend that can help keep you warm throughout the day. The Saturday sweatshirt features ribbed cuffs, hand-warming pockets and covered center zipper.

F. Game set

This game set features chess, backgammon, cribbage, dominoes and a deck of playing cards. Featuring a carbon fiber and mother-of-pearl interior panel plus a black protective outer case with contrast stitching, it looks great in your home or office.



Visit audi.us/collection for more.

TT Coupe | TT Roadster

- > 18" 5-double-spoke dynamic design wheels with 245/40 summer performance tires¹
- > Full LED headlights with all-weather lights
- > LED taillights with dynamic indicators
- > Power-adjustable, auto-dimming, power-folding, heated exterior side mirrors
- > LED turn indicators integrated into the exterior side mirror housings
- > Adaptive rear spoiler
- > Three-spoke multifunction flat-bottom sport steering wheel with shift paddles
- > Tilt and telescopic manually adjustable steering column
- > Aluminum Drift inlays
- > Leather/Alcantara® seating surfaces
- > Heated, eight-way power front sport seats with four-way power lumbar adjustment for driver and passenger
- > 50/50 split-folding rear seatbacks (Coupe)
- > Audi virtual cockpit (12.3" LCD fully digital instrument cluster with two visual modes: Classic and Infotainment)
- > MMI® touch with handwriting-recognition technology²
- > Audi sound system with 9 speakers, 155 watts and single DVD/CD player with MP3 playback capability
- > HD Radio™ Technology
- > SiriusXM® with 90-day trial subscription³
- > Dual SDXC card slots with 32GB operating capacity
- > Audi music interface with two USB ports for charging and aux-input

- > BLUETOOTH® wireless technology preparation with streaming audio for compatible devices
- > Audi phone box⁴ (signal booster and wireless charger)
- > Audi advanced key—keyless start, stop and entry⁵
- > Rain/light sensor for automatic windshield wipers and headlights
- > Audi drive select
- > Parking system plus with front and rear acoustic sensors⁶
- > Garage door opener (Homelink®)
- > Chrome roll bars (Roadster)
- > Advanced Airbag Protection System⁷
- > Front-passenger occupant detection for airbags⁷
- > Safety belt reminder for driver and front passenger
- > Lower Anchors and Tethers for Children (LATCH) in rear seats (Coupe)
- > Power central locking system with safety unlock feature if airbags deploy⁷
- > Electronic Stability Control (ESC) with secondary collision brake assist
- > Anti-lock Brake System (ABS) with Electronic Brake-pressure Distribution (EBD)
- > Rear view camera⁸
- > Tire-pressure monitoring system
- > Anti-theft vehicle alarm system

Available packages

Technology package

- > MMI® Navigation plus⁹
- > Audi connect® with six-month trial subscription⁹
- > Audi smartphone interface with Apple CarPlay® and Google™ Android Auto™¹⁰
- > Bang & Olufsen® Sound System with 12 speakers and 680 watts
- > Audi side assist⁶

S Sport seat package

- > Fine Nappa leather seats with diamond stitching
- > Eight-way power front S Sport seats with four-way power lumbar adjustment for driver and passenger
- > Neck-level heating system (Roadster)
- > Leather-covered center console and door armrests

S line® competition package

- > 19" Audi Sport® 5-arm-polygon design wheels, high-gloss anthracite black finish with 245/35 summer performance tires¹
- > Red front and rear brake calipers
- > S line® sport suspension
- > Gloss Black exterior package and Singleframe® grille
- > Gloss Black exterior side mirror housings
- > Gloss Black fixed rear wing spoiler
- > Black exhaust tips
- > Three-spoke multifunction flat-bottom sport steering wheel with shift paddles, S line® badging and contrast stitching
- > Brushed Aluminum, matte inlays
- > Black leather/Black Alcantara® seating surfaces with Rock Gray contrast diamond stitching and S line® embossing
- > Eight-way power front S Sport seats with four-way power lumbar adjustment for driver and passenger
- > Leather-covered center console and door armrests
- > Aluminum S line® door sill inlays
- > Black roll bars (Roadster)
- > Audi virtual cockpit with Sport visual mode

Available packages

19" Wheel package

- > 19" 5-arm-star design forged wheels, contrasting partially polished finish
- > 245/35 summer performance tires¹

Stand-alone options

- > 245/40 R18 all-season tires¹¹

TTS Featured Highlights | Packages and Options

TTS

- > 288 hp/280 lb-ft—2.0-liter TFSI® turbocharged four-cylinder engine with Audi valvelift system
- > Audi magnetic ride suspension
- > 19" Audi Sport® 5-spoke-blade design wheels with 245/35 summer performance tires¹
- > Full LED headlights with all-weather light
- > LED taillights with dynamic indicators
- > Power-adjustable, auto-dimming, power-folding, heated exterior side mirrors
- > LED turn indicators integrated into the exterior side mirror housings
- > Adaptive rear spoiler
- > Polished quad exhaust tips
- > TTS exterior appearance—front/rear bumpers, side sills and rear diffuser and Aluminum-optic exterior side mirror housings
- > Three-spoke multifunction flat-bottom sport steering wheel with shift paddles and S badging
- > Brushed Aluminum, matte inlays
- > Leather/Alcantara® seating surfaces with diamond stitching and S embossing
- > Heated, eight-way power front S Sport seats with four-way power lumbar adjustment and pneumatic side bolsters for driver and passenger
- > 50/50 split-folding rear seatbacks
- > Audi virtual cockpit (12.3" LCD fully digital instrument cluster with three visual modes: Sport, Classic and Infotainment)
- > MMI® touch with handwriting-recognition technology²
- > Audi sound system with 9 speakers, 155 watts and single DVD/CD player with MP3 playback capability
- > HD Radio™ Technology

Available packages

Technology package

- > MMI® Navigation plus⁸
- > Audi connect® with six-month trial subscription⁹
- > Audi smartphone interface with Apple CarPlay® and Google™ Android Auto™¹⁰
- > Bang & Olufsen® Sound System with 12 speakers and 680 watts
- > Audi side assist⁶

S Sport seat package

- > Fine Nappa leather seats with diamond stitching and S embossing
- > Extended leather (leather-covered center console, door armrests, instrument panel cover and driver airbag cover)

Black optic package

- > 20" Audi Sport® 5-V-spoke design wheels, matte titanium finish
- > 255/30 summer performance tires¹
- > Gloss Black exterior package and Singleframe® grille
- > Gloss Black exterior side mirror housings

Red brake calipers

- > Red front and rear brake calipers

- > SiriusXM® with 90-day trial subscription³
- > Dual SDXC card slots with 32GB operating capacity
- > Audi music interface with two USB ports for charging and aux-input
- > BLUETOOTH® wireless technology preparation with streaming audio for compatible devices
- > Audi phone box⁴ (signal booster and wireless charger)
- > Audi advanced key—keyless start, stop and entry⁵
- > Rain/light sensor for automatic windshield wipers and headlights
- > Audi drive select
- > Parking system plus with front and rear acoustic sensors⁷
- > Garage door opener (Homelink®)
- > Advanced Airbag Protection System⁷
- > Front-passenger occupant detection for airbags⁷
- > Safety belt reminder for driver and front passenger
- > Lower Anchors and Tethers for Children (LATCH) in rear seats
- > Power central locking system with safety unlock feature if airbags deploy⁷
- > Electronic Stability Control (ESC) with secondary collision brake assist
- > Anti-lock Brake System (ABS) with Electronic Brake-pressure Distribution (EBD)
- > Rear view camera⁶
- > Tire-pressure monitoring system
- > Anti-theft vehicle alarm system

Available packages

Competition package

- > 20" Audi Sport® 10-Y-spoke design wheels, high-gloss black finish
- > 255/30 summer performance tires¹
- > Red front and rear brake calipers
- > Gloss Black exterior package and Singleframe® grille
- > Gloss Black exterior side mirror housings
- > Gloss Black fixed rear wing spoiler
- > Leather/Alcantara® wrapped three-spoke multifunction flat-bottom steering wheel with shift paddles and 12-hr marker
- > Audi Sport® Carbon Fiber inlays
- > Fine Nappa leather seats with diamond stitching and S embossing
- > Eight-way power front S Sport seats with four-way power lumbar adjustment for driver and passenger
- > Extended leather (leather-covered center console, door armrests, instrument panel cover and driver airbag cover)

20" Wheel package

- > 20" Audi Sport® 10-Y-spoke design forged wheels
- > 255/30 summer performance tires¹

1 These tires may ride less comfortably, make more noise, and wear more quickly than other choices. To avoid tire, rim or vehicle damage, it is important that inflation pressure is regularly checked and maintained at optimum levels. High-performance tires are designed for optimum performance and handling in warm climates and are not suitable for cold, snowy or icy weather conditions. When driving during cold, snowy or icy weather conditions, ensure that your vehicle is equipped with appropriate all-season or winter weather tires. Tires are supplied and warranted by their manufacturer. 2 Always pay careful attention to the road, and do not drive while distracted. See Owner's Manual for further details and important limitations. 3 SiriusXM® and SiriusXM® Traffic subscriptions are sold separately or as a package after trial period and are continuous until you call SiriusXM® to cancel. See Customer Agreement for complete terms and more information at www.siriusxm.com. SiriusXM® Traffic service available in select markets. SiriusXM® U.S. Satellite Service available only to those in the 48 contiguous U.S.A., D.C. and Puerto Rico (with coverage limitations). 4 Requires compatible smart device. This is a CONSUMER device. BEFORE USE, you MUST REGISTER THIS DEVICE with your wireless provider and have your provider's consent. Most wireless providers consent to the use of signal boosters. Some providers may not consent to the use of this device on their network. If you are unsure, contact your provider. You MUST operate this device with approved antennas and cables as specified by the manufacturer. Antennas MUST be installed at least 20 cm (8 inches) from any person. You MUST cease operating this device immediately if requested by the FCC or a licensed wireless service provider. WARNING. E911 location information may not be provided or may be inaccurate for calls serviced by using this device. 5 See Owner's Manual for further details and important warnings about the keyless ignition feature. Do not leave vehicle unattended with the engine running, particularly in enclosed spaces. 6 Driver Assistance features are not substitutes for attentive driving. Please see your Owner's Manual for further details and important limitations. 7 Driver Assistance features are not substitutes for attentive driving. Please see your Owner's Manual for further details and important limitations. 8 Audi Navigation plus depends on signals from the worldwide Global Positioning Satellite network. The vehicle's electrical system, and existing wireless and satellite technologies, must be available and operating properly for the system to function. The system is designed to provide you with suggested routes in locating addresses, destinations and other points of interest. Changes in street names, construction zones, traffic flow, points of interest and other road system changes are beyond the control of Audi of America, Inc. Complete detailed mapping of lanes, roads, streets, toll roads, highways, etc., is not possible, therefore you may encounter discrepancies between the mapping and your actual location. Please rely on your individual judgment in determining whether or not to follow a suggested Audi Navigation plus route. 9 Always pay careful attention to the road, and do not drive while distracted. Audi connect® should be used only when it is safe and appropriate. Audi connect® services and features are optional, provided with the support of authorized affiliated and third-party service providers, and may require additional subscriptions with separate terms and conditions. Available on select models. Certain services collect location information; see Terms of Service for information about how to disable and for other details. Connect services are subject to technologies remaining commercially available; such services are not guaranteed and may not be available after 2021 for equipped MY17-20 vehicles. 10 Always pay careful attention to the road, and do not drive while distracted. Not all features available on all operating systems. Message and data usage rates apply. These features require compatible device, operating system and mobile apps. See mobile device and app providers for terms and privacy. "Android," "Android Auto," "Google Play" and other marks are trademarks of Google Inc. "Apple CarPlay" is a registered trademark of Apple Inc. 11 These tires may ride less comfortably, make more noise, and wear more quickly than other choices. To avoid tire, rim or vehicle damage, it is important that inflation pressure is regularly checked and maintained at optimum levels. Tires are supplied and warranted by their manufacturer.

Technical Specifications

Engineering | Performance

	TT Coupe	TT Roadster	TTS
Engine type	2.0-liter four-cylinder	2.0-liter four-cylinder	2.0-liter four-cylinder
Engine block/Cylinder head	Cast-iron/Aluminum-alloy	Cast-iron/Aluminum-alloy	Cast-iron/Aluminum-alloy
Displacement (cc)/Bore and stroke (mm)	1,984/82.5 x 92.8	1,984/82.5 x 92.8	1,984/82.5 x 92.8
Horsepower (@ rpm)	228 @ 5,000–6,700	228 @ 5,000–6,700	288 @ 5,400–6,200
Torque (lb-ft @ rpm)	258 @ 1,750–4,400	258 @ 1,750–4,400	280 @ 1,900–5,300
Compression ratio	9.6:1	9.6:1	9.3:1
Valvetrain	16-valve DOHC with Audi valvelift system	16-valve DOHC with Audi valvelift system	16-valve DOHC with Audi valvelift system
Induction/Fuel injection	Turbocharged/TFSI®	Turbocharged/TFSI®	Turbocharged/TFSI®
Acceleration (0–60 mph)	5.2 seconds ¹	5.5 seconds ¹	4.4 seconds ¹
Top track speed	130 mph ²	130 mph ²	155 mph ²

Transmission | Drivetrain

Seven-speed S tronic® dual-clutch automatic transmission and quattro® all-wheel drive	■	■	■
---	---	---	---

Body | Suspension | Chassis

Aluminum hybrid construction	■	■	■
MacPherson strut front suspension and four-link rear suspension	■	■	■
S line® sport suspension	□	□	—
Audi magnetic ride suspension	—	—	■
Four-piston fixed front calipers with S badging	—	—	■
Red brake calipers	□	□	□
Ventilated front disc/Solid rear disc brakes (in)	12.3/11.8	12.3/11.8	—
Ventilated front disc/Ventilated rear disc brakes (in)	—	—	13.3/12.2
Progressive steering	■	■	■
Steering ratio	14.6:1	14.6:1	14.6:1
Turning circle, curb-to-curb (ft)	36.1	36.1	36.1

Exterior measurements

Wheelbase (in)	98.6	98.6	98.6
Length (in)	165.0	165.0	165.0
Height (in)	53.3	53.4	53.3
Overall width with mirrors (in)	77.4	77.4	77.4
Track, front/rear (in)	61.9/61.1	61.9/61.1	61.9/61.1
Curb weight (lb)	3,208	3,395	3,263
Drag coefficient (Cw)	0.32	0.32	0.32

Interior measurements

Head room (in, front/rear)	37.1/33.8	36.6/—	37.1/33.8
Leg room (in, front/rear)	41.1/28.9	41.1/—	41.1/28.9
Shoulder room (in, front/rear)	53.6/47.9	53.6/—	53.6/47.9
Cargo volume (cu ft, rear seatbacks up)	12.0	7.5	12.0
Seating capacity	2+2	2	2+2

EPA mileage estimates | Capacities

Fuel economy (city/highway/combined)	23/31/26 ³	23/31/26 ³	23/29/25 ³
Fuel (gal)	14.5 ⁴	14.5 ⁴	14.5 ⁴

■ Standard □ Optional — Not applicable NA Information not available at time of printing

¹ Always pay careful attention to the road, and do not drive while distracted. ² Top track speed is electronically limited in the U.S. Always obey all speed and traffic laws. ³ 2019 EPA estimates. Your mileage will vary and depends on several factors, including your driving habits and vehicle condition. See www.fueleconomy.gov for details. ⁴ Never drive until the tank is completely empty. The irregular supply of fuel that results from that can cause engine misfires. Uncombusted fuel will then enter the exhaust system. This can cause overheating and damage to the catalytic converter.

Wheels

18" 5-double-spoke dynamic design



TT standard

19" 5-arm-star design forged, contrasting partially polished finish



TT 19" Wheel package

19" Audi Sport® 5-arm-polygon design, high-gloss anthracite black finish



TT S line® competition package

19" Audi Sport® 5-spoke-blade design



TT S standard

20" Audi Sport® 10-Y-spoke design forged



TT S 20" Wheel package

20" Audi Sport® 5-V-spoke design, matte titanium finish



TT S Black optic package

20" Audi Sport® 10-Y-spoke design, high-gloss black finish



TT S Competition package

Exterior Colors

Ibis White



TT, TTS

Turbo Blue



TTS

Vegas Yellow



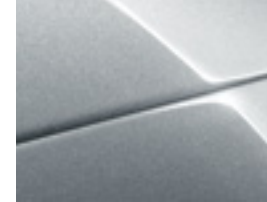
TTS

Cosmos Blue metallic



TT

Florett Silver metallic



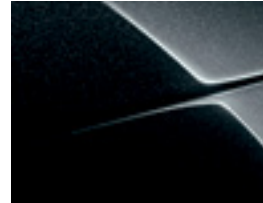
TT

Glacier White metallic



TT, TTS

Mythos Black metallic



TT, TTS

Nano Gray metallic



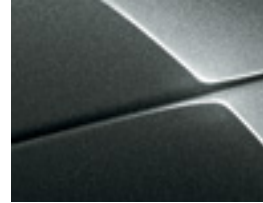
TT, TTS

Tango Red metallic



TT, TTS

Daytona Gray pearl

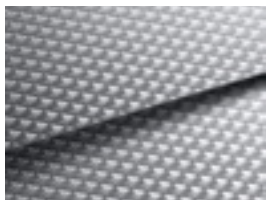


TTS

Interior Inlays



Aluminum Drift



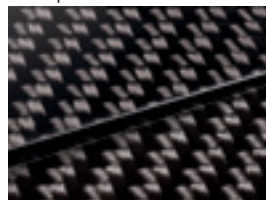
TT standard

Brushed Aluminum, matte



TT S line® competition package,
TTS standard

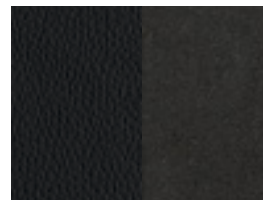
Audi Sport® Carbon Fiber



TTS Competition package

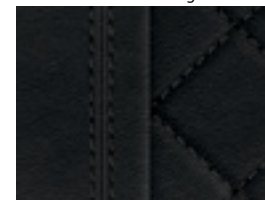
Interior Colors

Black leather/Black Alcantara®



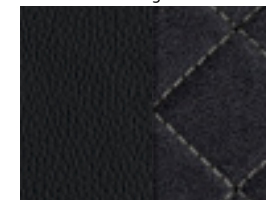
TT standard

Black Fine Nappa leather
with diamond stitching



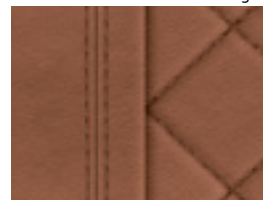
TT available

Black leather/Black Alcantara®
with Rock Gray contrast
diamond stitching



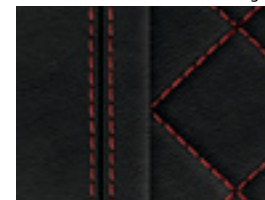
TT S line® competition package

Palomino Brown Fine Nappa
leather with diamond stitching



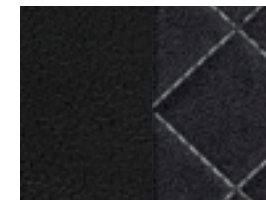
TT available

Black Fine Nappa leather with
Red contrast diamond stitching



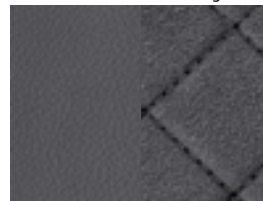
TTS Competition package

Black leather/Black Alcantara® with
Silver contrast diamond stitching



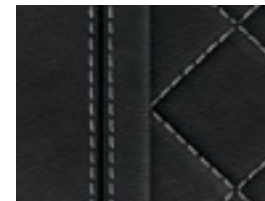
TTS standard

Rotor Gray leather/Rotor Gray
Alcantara® with Anthracite
contrast diamond stitching



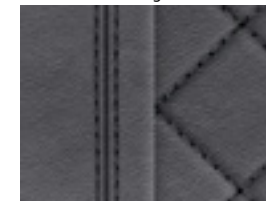
TTS standard

Black Fine Nappa leather with
Silver contrast diamond stitching



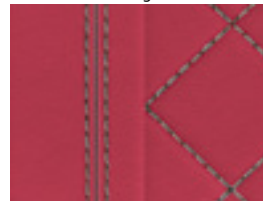
TTS S Sport seat package

Rotor Gray Fine Nappa leather
with Anthracite contrast
diamond stitching



TTS S Sport seat package

Express Red Fine Nappa leather
with Granite Gray contrast
diamond stitching



TTS S Sport seat package,
Competition package

TT
2019

Audi of America
Audiusa.com
Facebook.com/Audi

Note: A word about this brochure. Audi of America, Inc., believes the specifications in this brochure to be correct at the time of printing. However, specifications, standard equipment, options, fabrics, and colors are subject to change without notice. Some equipment may be unavailable when your vehicle is built. Please ask your dealer for advice concerning current availability of standard and optional equipment, and your dealer will verify that your vehicle will include the equipment you ordered. Vehicles in this brochure are shown with optional equipment. See your dealer for complete details on the Audi New Vehicle Limited Warranty, twelve-year limited warranty against corrosion perforation, and Audi 24/7 Roadside Assistance. (Roadside assistance coverage provided by Road America in the U.S. Certain conditions apply; see your dealer for details.) Tires supplied by various manufacturers. "Audi," all model names, "Audi connect," "Audi Sport," "MMI," "quattro," "S line," "S tronic," "Sideguard," "Singleframe," "TFSI" and the four rings logo are registered trademarks of AUDI AG. "Alcantara" is a registered trademark of Alcantara S.p.A. "Android Auto" and "Google" are trademarks of Google Inc. "Apple CarPlay" is a registered trademark of Apple Inc. "Asobu" is a registered trademark of Ad-N-Art, Inc. "Bang & Olufsen" is a registered trademark of Bang & Olufsen. The BLUETOOTH word mark and logos are owned by the Bluetooth SIG, Inc., and any use of such marks by AUDI AG is under license. "Facebook" is a registered trademark of Facebook, Inc. "HeatGear" and "Under Armour" are registered trademarks of Under Armour Inc. "HD Radio" and the HD Radio logo are proprietary trademarks of iBiquity Digital Corporation. "HomeLink" is a registered trademark of Gentex Corporation. "SiriusXM" and all related marks and logos are trademarks of Sirius XM Radio Inc. and its subsidiaries. "Tavik" is a trademark of TAVIK HOLDINGS, LLC. "Wi-Fi" is a registered trademark of the Wi-Fi Alliance. All other trademarks are the property of their respective owners. Some European models shown. Some features may not be available at time of order.